



Making MUSIC

A parent and teacher guide to music instruction in metro Chicago



Making MUSIC

A parent and teacher guide to music instruction in metro Chicago

Made possible by the Chicago Symphony Orchestra and BP Adventures in Music.





Welcome

TABLE OF CONTENTS

Why Study Music? 2

How do I choose an instrument? 3

What organizations offer music instruction? 4

What organizations offer performance opportunities? 14

Where can I find the organizations listed in this guide? . . . 20

The Chicago Symphony Orchestra Association believes that music has the power to transform lives.

For more than 90 years, we have offered education programming for young people in our city. Over the last several years, we have renewed our understanding of and investment in music education, and we strongly believe that active participation in music nurtures such fundamental values as creative expression, a sense of shared achievement and joy, disciplined learning, and individual accomplishment.

In addition to the inherent beauty of melody, rhythm and harmony, music offers a creative way for youth to express feelings, describe a place or time, and depict and understand the lives of people nearby and far away.

We are very fortunate to have allies in the Chicago Public Schools and the outstanding community music schools, youth orchestras, and choirs from neighborhoods throughout the city and suburbs. This guide highlights these important programs.

Together with our colleagues at these organizations, we are committed to supporting enriching musical experiences for young people in Chicagoland, from the initial moment of curiosity to the many instances through which life-long connections are made.

We are proud to share this brochure with you, and we encourage you to explore the opportunities described inside. We hope this information will support the interests and dreams you have for your family or students, through enjoyment of music and the richly varied benefits that musical study provides.

Warm regards,

Charlie Grode
 Vice President
 Learning, Access, and Training Initiatives
 Chicago Symphony Orchestra Association



WHY STUDY MUSIC? _____

Playing an instrument is a wonderful way to bring the joy of music into the life of a child.

MUSIC HELPS CHILDREN LEARN. _____

In addition to learning about music itself, children learn a variety of other skills through music. Music is beneficial to children's academic and social skills and also has a great impact as children grow up.

By playing an instrument, your child will learn to:

- Listen carefully
- Think critically and express ideas clearly and creatively
- Develop discipline
- Work as a team with other children
- Take pride in the results of hard work
- Be comfortable and confident in front of a group

By playing music, your child will discover that:

- Learning can be fun
- There is often more than one right answer

Regardless of whether your child or student wants to play in the Chicago Symphony Orchestra or be the next American Idol®, music will open doors to many wonderful opportunities.

Creativity is important—and not just in the arts!

Schools and businesses of all kinds consider creativity one of the most valuable skills. Creativity is an important attribute of great leaders. Studying music is a great way to encourage the development of every child's creative instincts.

"U.S. employers rate creativity and innovation among the top five skills that will increase in importance over the next five years."

The Conference Board, Corporate Voices for Working Families, Partnership for 21st Century Skills, Society for Human Resource Management, *Are They Really Ready to Work? Employers' Perspectives on the Basic Knowledge and Applied Skills of New Entrants to the 21st Century U.S. Workforce*, Research Report BED-06, 2006.



HOW DO I CHOOSE AN INSTRUMENT? _____

There is a perfect instrument for everyone!

Notice if your child or student gravitates to the sound of one instrument over all the others. If he or she is not excited about an instrument, he or she probably won't take the time to practice at home. Without regular practice, you cannot expect regular progress.

Here are a few suggestions:

- String instruments come in many small sizes, appropriate for children as young as three years old.
- Many of the wind instruments are best suited for children eight years and older. Making a sound on these instruments requires a lot of physical coordination, which is easier for older children.
- If you are still undecided, the piano offers a great introduction to reading music, no matter what other instrument your child may play eventually.
- Singing in a choir is a great way to develop the listening skills that will aid in the study of any other instrument.
- "Classical" technique will help even if your child wants to play folk, jazz, or rock.

ISN'T IT EXPENSIVE? _____

Playing an instrument does not have to be expensive! In fact, there are a variety of affordable options at each of the organizations listed in this guide. For example:

- Rather than buying a new instrument, you might rent to own or purchase a gently used instrument from eBay.
- Rather than taking individual lessons, you might start with a group class that will allow your child or student to explore his or her interests first.

WHERE DO I GET AN INSTRUMENT? _____

Whether you decide to purchase or rent an instrument, the organizations in this brochure can recommend a nearby instrument dealer offering musical instruments across a range of prices.

WHERE DO I START?

Group classes or individual lessons are the best way to begin your child or student's musical journey, providing a foundation for life-long enjoyment of music of all styles. Close interaction with an expert teacher will inspire your child or student to take music seriously and strive for a fun and rewarding experience.

Please use the map on pages 20 and 21 to identify the music instruction organization closest to you.



Beverly Arts Center

The Beverly Arts Center is a multicultural arts education community that provides both technical expertise and creative guidance for students of all ages in a variety of art forms including music, dance, theater, film, visual, literary, and interdisciplinary arts.

SOUTH SIDE

Address: 2407 W. 111th St., Chicago, IL 60655

Serving: Families from across south Chicagoland, including: Beverly, Morgan Park, Evergreen Park, Blue Island, Mt. Greenwood, Alsip, Oak Lawn, Crestwood, Harvey, Chicago Heights, Ashburn, Gresham.

PROGRAMS offered:

Kindermusik® classes for young children; multilevel group classes and individual lessons for students of all ages and abilities in keyboard, violin, drums, guitar, bagpipes, woodwinds and voice.

Is FINANCIAL ASSISTANCE available?

Not at this time.

Access by PUBLIC TRANSPORTATION:

Metra Rock Island line (111th Street/Beverly stop); CTA bus routes 49A, 111, and 349.

For more INFORMATION or to ENROLL:

Please call **773.445.3838** or visit beverlyartscenter.org.



Chicago West Community Music Center

Chicago West Community Music Center offers innovative programs that are designed to improve economic, intellectual and social conditions through education and training in music.

WEST SIDE

Address: Garfield Park Field House

100 N. Central Park Avenue, Chicago, IL 60624

Serving: The west side of Chicago and the near western suburbs.

PROGRAMS offered:

Early-childhood music classes; individual and group instruction, including piano, guitar, voice, music theory and ear training; The Business of Music program, a job training program for high school students exploring the business aspects of the music industry.

Is FINANCIAL ASSISTANCE available?

The Business of Music program is a paid opportunity.

Access by PUBLIC TRANSPORTATION:

CTA Green line (Conservatory stop); CTA bus route 82 (Kimball-Homan).

For more INFORMATION or to ENROLL:

Please call **708.386.5315** or visit cwcmc.org.



Chicago Symphony Orchestra Percussion Scholarship Program

Founded and directed by CSO percussionist Patricia Dash and Douglas Waddell, percussionist with Lyric Opera of Chicago, the Percussion Scholarship Program (PSP) offers weekly percussion instruction on a full scholarship basis. Participating students are selected for the group as third or fourth graders through a rigorous application and personal interview process.

DOWNTOWN CHICAGO

Address: Symphony Center, 220 S. Michigan Avenue, Chicago, IL 60604

Serving: Chicago residents in grades three through eight. Exceptional students are invited to participate on a year to year basis through grade 12.

PROGRAMS offered:

In addition to intensive, individual instruction, PSP performs twice annually at Symphony Center and has appeared at Macy's Day of Music. Members of the PSP have performed as soloists with the Chicago Symphony Orchestra as part of CSO Youth Concerts, the Kraft Family Matinee Series and *Welcome Yule!* concerts.

Is FINANCIAL ASSISTANCE available?

Once accepted, all portions of the Percussion Scholarship Program are provided at no cost to students.

Access by PUBLIC TRANSPORTATION:

CTA Red line (Jackson stop); Brown, Orange, Green, Purple, and Pink lines (Adams/Wabash stop); Metra Electric line (Van Buren stop); CTA bus routes 3 (King Drive), 4 (Cottage Grove), and 151 (Sheridan), among others.

For more INFORMATION:

Please call **312.294.3410** or visit cso.org/percussion.

community
school
of the
arts

Community School of the Arts at Wheaton College

Wheaton College's Community School of the Arts provides music instruction to students of all ages and ability levels in order to help students develop their creative and artistic potential. The school provides a stimulating and nurturing Christian atmosphere for learning and performing.

WESTERN SUBURBS

Address: Pierce 303, 501 College Avenue, Wheaton, IL 60187

Serving: Families from over 50 communities throughout the greater Chicago area.

PROGRAMS offered:

Kindermusik® and Musikgarten® for children ages birth through six years; Suzuki instruction on violin, viola, cello, piano, and flute (age 4 through grade 12); preparatory instruction on violin, viola, cello, piano, flute, voice, and handbells (age 4 through grade 12); private lessons, group classes, and chamber ensemble opportunities.

Is FINANCIAL ASSISTANCE available?

Yes. Please contact the school for more information.

Access by PUBLIC TRANSPORTATION:

Metra Union Pacific West line (College Avenue stop).

For more INFORMATION or to ENROLL:

Please contact the registration coordinator at **630.752.5567** or visit wheaton.edu/csa.



DePaul University Community Music Division

The DePaul University Community Music Division offers a diversified program to interested students of all ages, levels and backgrounds. The school provides the opportunity for serious musical study and growth in a nurturing environment.

NORTH SIDE

Address: DePaul University School of Music
804 W. Belden Avenue, Chicago, IL 60614

Serving: Families from all areas of the city and additional communities through after-school partnership programs.

PROGRAMS offered:

Kindermusik® classes for children ages birth through six years; Suzuki instruction on violin, viola, cello, piano, flute, guitar; private instruction on all instruments; Prelude Choir (grades one–two); DePaul Youth String Orchestra (ages 8–15); Musical Theatre Workshop (teens); music theory; chamber music; DePaul Community Chorus; New Horizons Band & Orchestra (adults); Adult Intensive Chamber Music Workshop.

Is FINANCIAL ASSISTANCE available?

Yes. Please contact the school for more information.

Access by PUBLIC TRANSPORTATION:

CTA Red, Brown, and Purple lines (Fullerton stop);
CTA bus routes 8 (Halsted), 11 (Lincoln), and 74 (Fullerton), among others.

For more INFORMATION, or to ENROLL:

Please call **773.325.7262** or visit music.depaul.edu/cmd



Hyde Park Suzuki Institute

The Hyde Park Suzuki Institute is committed to providing access to high quality musical instruction and performance opportunities to families of our culturally diverse communities in Chicago. Our students are encouraged to seek excellence and high musical achievement.

SOUTH SIDE

Address: 1448 East 53rd Street, Chicago, IL 60615

Serving: Students from the south side of Chicago, including: Hyde Park, Kenwood, Oakland, Bronzeville and South Shore.

PROGRAMS offered:

Kindermusik® classes for children ages birth through three years; Suzuki instruction in violin, viola, cello, guitar and piano (age three and up); traditional studies for advanced and adult students, including chamber music, competition and audition preparation and college preparatory studies.

Is FINANCIAL ASSISTANCE available?

Yes. Please contact the school for more information.

Access by PUBLIC TRANSPORTATION:

Metra Electric line (51st–53rd Street stop);
CTA bus routes 6 (Jackson Park Express), 15 (Jeffrey), and 28 (Stony Island).

For more INFORMATION or to ENROLL:

Please call **773.643.1388** or visit hydeparksuzuki.com.



Kindermusik® at Symphony Center

The Chicago Symphony Orchestra is proud to offer Kindermusik® at Symphony Center, where parents and children explore music through moving, singing, and playing instruments! A wonderful variety of activities develop music and language skills, symbolic thinking, coordination, and social interaction.

DOWNTOWN CHICAGO

Address: The Elizabeth Morse Genius Learning Center
67 E. Adams Street, Chicago, IL 60604

Serving: Families from all areas of the city.

PROGRAMS offered:

Age-specific classes for children from birth through five years. In addition to developing basic musical abilities, all activities address other developmental skills, from balance and dexterity to literacy and independence. Each term, classes are enhanced by visits by Chicago Symphony Orchestra musicians.

Is FINANCIAL ASSISTANCE available?

Not at this time.

Access by PUBLIC TRANSPORTATION:

CTA Red line (Jackson stop); Brown, Orange, Green, Purple, and Pink lines (Adams/Wabash stop); Metra Electric line (Van Buren stop); CTA bus routes 3 (King Drive), 4 (Cottage Grove), and 151 (Sheridan), among others.

For more INFORMATION:

Please call **312.294.3410** or visit cso.org/kindermusik.

To ENROLL:

Please call **312.294.3064**.



Merit School of Music
making music...building lives

Merit School of Music

Merit School of Music provides high-quality music education to students in metropolitan Chicago. The school's primary goals are to remove economic barriers to participation, to help young people achieve their full musical potential, and to stimulate personal and educational growth through music.

DOWNTOWN CHICAGO

Address: Joy Faith Knapp Music Center, 38 S. Peoria Street, Chicago, IL 60607

Serving: Students from all areas of Chicago.

PROGRAMS offered:

Comprehensive music programming for children ages newborn to 18 years, including early childhood classes, instrumental and vocal group instruction, private lessons, music theory, ensembles and musical theatre. Classical and jazz offerings are available.

Is FINANCIAL ASSISTANCE available?

Yes. Please contact the school for more information.

Access by PUBLIC TRANSPORTATION:

CTA Blue line (UIC–Halsted stop);
CTA bus routes 8 (Halsted) and 20 (Madison).

For more INFORMATION, or to ENROLL:

Please call **312.786.9428** or visit meritmusic.org.



Music House, Inc.

Music House, Inc., strives to provide music students with the tools and support needed to enjoy making music for a lifetime.

NORTH SIDE

Address: 2925 W. Devon Avenue, Chicago, IL 60659

Serving: Peterson Park, North Park, West Ridge, and Albany Park.

PROGRAMS offered:

Certified Suzuki and traditional instruction on violin, fiddle, cello, guitar, piano, woodwinds, brass and percussion; youth orchestra, Fiddle Team, and School of Rock.

Is FINANCIAL ASSISTANCE available?

Not at this time.

Access by PUBLIC TRANSPORTATION:

CTA bus routes 11 (Lincoln), 49B (North Western), and 155 (Devon).

For more INFORMATION or to ENROLL:

Please call **773.761.3770** or visit **musichouseinc.com**.



The Music Institute of Chicago

The Music Institute of Chicago (MIC) believes that the enjoyment and understanding of music and the development of creative and performing skills enhance the quality of life and nourish the human spirit. MIC provides the foundation for lifelong enjoyment of music.

NORTHERN SUBURBS

Address: **Evanston Campus**
1490 Chicago Avenue
Evanston, IL 60201

Winnetka Campus
300 Green Bay Road
Winnetka, IL 60093

Dempster Street Campus
2008 Dempster Street
Evanston, IL 60202

Lincolnshire Campus
Lutheran Church of the Holy Spirit
30 Riverwoods Road
Lincolnshire, IL 60069

Highland Park Campus
477 Elm Place
Highland Park, IL 60035

Serving: The north side of Chicago and northern suburbs.

PROGRAMS offered:

Musikgarten classes (ages four months to six years); Suzuki instruction; private instruction on all instruments and voice; chamber music and large ensembles (orchestras, bands, and choirs); musical theater; world music; early music; adult studies; and Creative Arts Therapy.

Is FINANCIAL ASSISTANCE available?

Yes. Please contact the school for more information.

Access by PUBLIC TRANSPORTATION:

Our locations are accessible by public transportation. Please contact the school for information specific to each campus.

For more INFORMATION or to ENROLL:

Please call **847.905.1500** ext. **127**, or visit **musicinst.org**.



NEWMUSIC SCHOOL

New Music School

New Music School (NMS) offers curricular-based private lessons through innovative curriculum and partnerships.

DOWNTOWN CHICAGO

Address: NMS is a "virtual school," providing a unified, web-based curriculum for students across the Chicago area. Instruction is provided in students' homes, teachers' studios, youth orchestras, and local schools.

Serving: All areas of Chicago and northern, western and northwestern suburbs.

PROGRAMS offered:

New Music School offers holistic, curriculum-based private lessons and chamber ensembles specializing in new music. Students work with leading arts organizations in Chicago to learn music of various genres: operas, ballets, recording studios, video games and movie soundtracks.

Is FINANCIAL ASSISTANCE available?

Yes. Please contact the school for more information.

Access by PUBLIC TRANSPORTATION:

All faculty chairs are located near public transportation.

For more INFORMATION or to ENROLL:

Please call **773.936.8742** or visit **newmusicschool.com**.



Oak Park Suzuki School

The Oak Park Suzuki School is dedicated to arousing a passion for excellence in the study of music among young people. The Suzuki philosophy believes that all children are born with musical ability.

WESTERN SUBURBS

Address: 510 S. Cuyler Avenue, Oak Park, IL 60304

Serving: Oak Park and surrounding area.

PROGRAMS offered:

Violin lessons for children ages 3-17. All students attend a private lesson and a group lesson each week.

Is FINANCIAL ASSISTANCE available?

Yes, on a limited basis. Please contact the school for more information.

Access by PUBLIC TRANSPORTATION:

CTA Green line (Ridgeland stop); CTA bus route 86 (Narragansett/Ridgeland).

For more INFORMATION or to ENROLL:

Please call **630.886.6183** or visit **oakparksuzukischool.com**.



Old Town School of Folk Music

The Old Town School of Folk Music teaches and celebrates music and cultural expressions rooted in the traditions of diverse American and global communities.

NORTH SIDE

Address: Lincoln Square
4544 N. Lincoln Avenue
Chicago, IL 60626

Lincoln Park
909 W. Armitage Avenue
Chicago, IL, 60614

Serving: Lincoln Square, Uptown, Lakeview, Lincoln Park and Near North Side.

PROGRAMS offered:

A diverse range of programs for young children through senior citizens, including group classes and private lessons on a variety of musical instruments. Styles include classical, folk, blues, pop, rock, jazz, Latin, African, Caribbean, Middle Eastern, Celtic, country, flamenco, and gospel. Additional offerings include assorted ensembles, songwriting and music production.

Is FINANCIAL ASSISTANCE available?

Yes. Please contact the school for more information.

Access by PUBLIC TRANSPORTATION:

Lincoln Square location: CTA Brown line (Western stop); CTA bus route 11 (Lincoln), 49 (Western) and 78 (Montrose). **Lincoln Park location:** CTA Brown line (Armitage stop); CTA bus routes 73 (Armitage) and 74 (Fullerton).

For more INFORMATION or to ENROLL:

Please call **773.728.6000** or visit oldtownschool.org.



People's Music School

The People's Music School creates a world of harmony, creativity, and passion by fostering the universal language of music through free instruction and performance. The People's Music School is the only totally free community music school in the country.

NORTH SIDE

Address: 931 West Eastwood Avenue, Chicago, IL 60640

Serving: Located in Uptown, serving the north side of Chicago.

PROGRAMS offered:

Group classes, private lessons, and ensembles for students age five and up. Instruction is available on most instruments, with an emphasis on orchestral instruments. Students are required to be enrolled in a music theory class in addition to their other activities (private lessons, ensembles, etc.).

Is FINANCIAL ASSISTANCE available?

All classes, lessons, and activities are free of financial charge. Admission is first-come, first-served on new student registration days, held three times per year. Enrolled students may continue indefinitely, providing that they have met all of the requirements of the school (attendance, volunteering, etc.).

Access by PUBLIC TRANSPORTATION:

CTA Red line (Wilson stop); CTA bus routes 145 (Wilson) and 151 (Sheridan).

For more INFORMATION or to ENROLL:

Please call **773.784.7032** or visit peoplesmusicschool.org.



Ravinia Festival Lawndale Partnership

The Ravinia-Lawndale Partnership offers free, high-quality music instruction to children and adults in the Lawndale neighborhood. The conservatory serves over 150 students each year and offers classes at several park locations in Lawndale.

WEST SIDE

Address: Douglas Park Field House
1401 S. Sacramento Boulevard, Chicago, IL 60623

Serving: Lawndale neighborhood.

PROGRAMS offered:

Individual instruction in violin, guitar, piano and voice. The program also provides an opportunity for community involvement with music through performance and concert going.

Is FINANCIAL ASSISTANCE available?

The conservatory is tuition-free based on a needs assessment. Some fees may apply. Please contact the school for more information.

Access by PUBLIC TRANSPORTATION:

CTA bus routes 12 (Roosevelt Rd), 52 (Kedzie/California), or 94 (South California).

For more INFORMATION:

Please call **773.522.5303**.

To ENROLL:

Lawndale residents may register for classes by stopping by the Ravinia-Lawndale Partnership office at the Douglas Park Field House.



Sherwood Conservatory of Music at Columbia College Chicago

Sherwood Conservatory of Music, a part of Columbia College Chicago, is an urban center for comprehensive community music education. Located in the South Loop neighborhood, Sherwood offers classes and lessons for beginners and advanced students, toddlers, children, teens, adults and seniors.

DOWNTOWN CHICAGO

Address: 1312 S. Michigan Avenue, Chicago, IL 60605

Serving: Students from all areas of Chicago, including: South Loop, Loop, Near North Side, Near West Side, Bridgeport, Hyde Park, South Shore, Woodlawn, Englewood, and South Chicago.

PROGRAMS offered:

A variety of early childhood music classes; Suzuki instruction; individual lessons in 15 different instruments and voice; group classes for children, teens, and adults; ensembles, including chorus, orchestra, and chamber music. Special summer offerings include: Children's Opera Camp, Flute Institute, Chamber Music Workshop, Latin Jazz Workshop, and "Keys to Style" Piano Workshop.

Is FINANCIAL ASSISTANCE available?

Yes. Please contact the school for more information.

Access by PUBLIC TRANSPORTATION:

CTA Red, Green, and Orange lines (Roosevelt stop); Metra Electric and South Shore lines (Roosevelt stop); CTA bus routes 1 (Indiana / Hyde Park), 3 (King Drive), and 4 (Cottage Grove).

For more INFORMATION or to ENROLL:

Contact the Registrar at **312.427.6267**, ext. 116 or visit colum.edu/sherwoodconservatory.org.

Suzuki-Orff School of Music

The Suzuki-Orff School of Music is committed to exceptional arts education and helping children reach their greatest potential. Our innovative curricula nurture creativity and self-expression; develop critical thinking skills; accelerate academic achievement; and incorporate family as an integral part of a child's learning experiences.



NORTH SIDE

Address: 1148 W. Chicago Avenue, Chicago, IL 60622

Serving: Downtown, Ukrainian Village, Logan Square, Wicker Park, Little Village, West Town, Near North Side, and Near West Side.

Summary of PROGRAMS offered:

Baby Steps classes for children ages six months to five years; Suzuki instruction in violin, viola, cello, piano, flute, guitar and voice; Orff instruction for children ages 5–10 years; music theory, composition and chamber music; adult instrument instruction.

Is FINANCIAL ASSISTANCE available?

Yes. Please contact the school for more information.

Access by PUBLIC TRANSPORTATION:

CTA Blue line (Chicago Avenue stop); CTA bus routes 56 (Milwaukee) and 66 (Chicago).

For more INFORMATION or to ENROLL:

Please call **312.738.2646** or visit **suzukiorff.org**.

WHAT'S NEXT?

After developing basic skills on an instrument, playing in an ensemble is the next step. Most school music programs offer an introduction to ensemble playing. If your child or student is looking for more, joining a youth orchestra or chorus will provide the opportunity to play exciting music with other talented and inspired young musicians.

The performing groups profiled in this brochure offer a range of specialized opportunities for students of all levels.

Please use the map on pages 20 and 21 to identify the music performance program closest to you.



chicago children's choir



Chicago Children's Choir

Chicago Children's Choir is a multiracial, multicultural choral music education organization, shaping the future by making a difference in the lives of children and youth through musical excellence.

THROUGHOUT THE CITY

Address: Chicago Children's Choir Administrative Offices
78 E Washington, 5th Floor, Chicago, IL 60602

Serving: Children ages 8–18 from all areas of the city. Neighborhood Programs serve Albany Park, Beverly (Beverly Arts Center), Garfield Park (Off the Street Club), Humboldt Park (Casa Central), Hyde Park (First Unitarian Church), Lincoln Park (DePaul Community Music), Pilsen/Little Village (Rauner Family YMCA) and Rogers Park (St. Scholastica Academy).

PROGRAMS offered:

The Choir currently works in 46 schools offering after-school programs in seven Chicago neighborhoods and the internationally acclaimed Concert Choir. Open auditions are held in September, January and June for the Choir's after-school Neighborhood Programs. Auditioning is easy with no advance preparation needed, open to boys and girls ages 8–14.

Is FINANCIAL ASSISTANCE available?

Tuition is on a sliding scale based on family income.

Access by PUBLIC TRANSPORTATION:

All Neighborhood Programs are accessible by public transportation. Please contact the Choir offices for information specific to each location.

For more INFORMATION or to schedule an AUDITION:

Contact the Operations Coordinator at
312.849.8300 ext. 10 or visit cchoir.org.



Chicago Public Schools

The Chicago Public Schools offer several unique and ongoing opportunities for young musicians to develop their talents and enthusiasm for music.

THROUGHOUT THE CITY



All-City Performing Groups and Citywide Music Contests

The Chicago Public Schools All-City Performing Groups provide experience and instruction to selected groups of talented Chicago Public School students, from grades 3–12. Citywide Music Contests provide opportunities for solo performers and small and large ensembles to receive adjudication by high school and college music instructors and performers from across the Chicago area.

Address: All-City Performing Groups rehearse at fixed sites, including select Chicago Public Schools, the Merit School of Music, Gallery 37, and Columbia College Chicago. Citywide Music Contests are held at select Chicago Public Schools.

Serving: Students from the Chicago Public Schools and other school districts (upon approval). All participants must be students in good standing at their respective schools.

PROGRAMS offered:

The All-City Performing Groups include **Elementary School Concert Band, Jazz Ensemble, String Ensemble, and Youth Chorus**; and **High School Concert Band, Jazz Ensemble, Symphony Orchestra, and Chorus**. Participation is determined by audition, held in early fall. Weekly rehearsals are held October through May of each year. Each year concludes with a Festival Concert, held at Symphony Center.

The Citywide Music Contests offer various opportunities for adjudicated performance, including: the **Instrumental Solo Contest** (including piano), open to elementary through high school participants; the **Instrumental Ensemble Contest**, limited to high school students only; the **Vocal Solo and Ensemble Contests**, limited to high school students only; **Band, Orchestra, and Choral Contests**, open to elementary through high school students; **Jazz Ensemble and Jazz Combo Contests**, open to elementary through high school students.

Is FINANCIAL ASSISTANCE available?

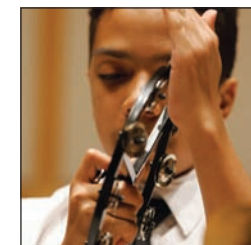
Participation in All-City Performing Groups is free of tuition for students who successfully audition into an ensemble; participation in Citywide Music Contests involves a nominal registration fee.

Access by PUBLIC TRANSPORTATION:

All rehearsal and contest sites are accessible by public transportation; for more information about a specific location, please contact the Office of Arts Education.

For more INFORMATION or to schedule an AUDITION:

Please contact the Chicago Public Schools Office of Arts Education at **773.553.2170**.



Chicago Youth Symphony Orchestras

Boasting more than 60 years of outstanding music making, Chicago Youth Symphony Orchestras (CYSO) is where the Chicago area's best young musicians begin their journey to become the classical musicians and leaders of tomorrow.



DOWNTOWN CHICAGO

Address: 410 S. Michigan Avenue, Suite 833, Chicago, IL 60605

Serving: All neighborhoods throughout the Chicago metropolitan area.

PROGRAMS offered:

Five orchestras that offer outstanding ensemble experiences for students of all levels: *Preparatory Strings*, for elementary school-aged musicians; *Debut Orchestra*, for students ranging from the fifth to ninth grades; *Concert Orchestra*, for advanced musicians in middle through high school; *Symphony Orchestra*, for advanced musicians in high school; and *Encore Chamber Orchestra*, for select members of the Symphony Orchestra. CYSO also offers music theory classes and an extensive chamber music program.

Is FINANCIAL ASSISTANCE available?

Need-based scholarships are available for students who qualify and successfully audition into ensemble programs.

Access by PUBLIC TRANSPORTATION:

CTA Red and Blue lines (Jackson stop); Brown, Orange, Green, Purple, and Pink lines (Library stop); Metra Electric line (Van Buren stop); CTA bus routes 3 (King Drive), 4 (Cottage Grove), and 151 (Sheridan), among others.

For more INFORMATION or to schedule an AUDITION:

Contact the General Manager at **312.939.2207** ext **23**, or visit **cyso.org**.



Hyde Park Youth Symphony

The Hyde Park Youth Symphony is a community-based organization dedicated to providing a high-quality arts experience to children on the south side of Chicago. The Symphony serves a broad range of children and families, nurturing in them a love for music that will last a lifetime.



SOUTH SIDE

Address: 5600 S. Woodlawn Avenue, Chicago, IL 60637

Serving: Students from the south side of Chicago.

PROGRAMS offered:

Three ensembles that offer outstanding experiences for students of all levels: *Junior Strings*, for students in grades 2–6 with at least six months of experience on their instruments; *Intermediate Orchestra*, for students in grades 5–8 with at least two years of experience on their instruments; *Senior Orchestra*, for students in grades 7–12 with at least three to four years of experience on their instruments. Additional programs include chamber music and an annual concerto competition.

Is FINANCIAL ASSISTANCE available?

Yes. Please contact the Symphony for more information.

Access by PUBLIC TRANSPORTATION:

Metra Electric line (55th–56th–57th Street stop);
CTA bus routes 55 (55th Street) and 172 (University of Chicago–Kenwood).

For more INFORMATION or to schedule an AUDITION:

Please contact the music director at **847.651.5055** or visit **hyps.org**.



Midwest Young Artists

With a vision to create an exceptional environment for young musicians, Midwest Young Artists provides its students with outstanding music ensemble experiences and amazing performance opportunities, while preserving a supportive and nurturing environment.



Midwest Young Artists

NORTHERN SUBURBS

Address: 878 Lyster Road, Highwood, IL 60040

Serving: Students from 74 communities in the metropolitan Chicago area, northwest Indiana and southeast Wisconsin.

PROGRAMS offered:

Five orchestras based on ability and age; an extensive chamber music program; jazz ensembles and combos; three choruses and an opera program; ear training, music theory and history; recording technology; audition and competition preparation; college counseling; master classes.

Is FINANCIAL ASSISTANCE available?

Yes. Please contact MYA for more information.

Access by PUBLIC TRANSPORTATION:

Metra Union Pacific North line (Fort Sheridan stop).

For more INFORMATION or to ENROLL:

Please contact the Registrar or Director of Administration at **847.926.9898** or visit **mya.org**.



The Protégé Philharmonic

Located in downtown Chicago, The Protégé Philharmonic is a premier training orchestra for high school and advanced junior high students, offering a high-level music education for serious young musicians.



DOWNTOWN CHICAGO

Address: 218 South Wabash Avenue, Suite 260, Chicago, IL 60604

Serving: Students from all across the Chicago metropolitan area.

PROGRAMS offered:

Weekly orchestra rehearsals, chamber music and solo competitions. The Protégé Philharmonic rehearses and performs under the expert baton of Founder and Music Director, Joseph Glymph.

Is FINANCIAL ASSISTANCE available?

Yes. Please contact the Philharmonic for more information.

Access by PUBLIC TRANSPORTATION:

CTA Red and Blue lines (Jackson stop); Brown, Orange, Green, Purple, and Pink lines (Library stop); Metra Electric line (Van Buren stop); CTA bus routes 3 (King Drive), 4 (Cottage Grove), and 151 (Sheridan), among others.

For more INFORMATION or to schedule an AUDITION:

Please call **312.341.1521** or visit **classicalsymphonyorchestra.org**.





Making MUSIC

A parent and teacher guide to music instruction in metro Chicago

Find your neighborhood on the map. Identify the closest community music school, youth orchestra or choir by using the following key. Turn to the appropriate page for more information.

MUSIC INSTRUCTION 4-13

- 1** Beverly Arts Center 4
- 2** Chicago West Community Music Center . . . 4
- 3** Chicago Symphony Orchestra's Percussion Scholarship Program 5
- 4** Community School of the Arts at Wheaton College 5
- 5** DePaul University Community Music Division 6
- 6** Hyde Park Suzuki Institute 6
- 7** Kindermusik® at Symphony Center 7
- 8** Merit School of Music 7
- 9** Music House, Inc. 8
- 10** Music Institute of Chicago 8
- 11** New Music School 9
- 12** Oak Park Suzuki Institute 9
- 13** Old Town School of Folk Music 10
- 14** People's Music School 10
- 15** Ravinia Festival Lawndale Partnership . . . 11
- 16** Sherwood Conservatory of Music 11
- 17** Suzuki-Orff School 12

PERFORMANCE OPPORTUNITIES 13-19

- 1** Chicago Children's Choir 14
- 2** Chicago Public Schools 15
- 3** Chicago Youth Symphony Orchestras 16
- 4** Hyde Park Youth Symphony 17
- 5** Midwest Young Artists 18
- 6** Protégé Philharmonic 19